



MOKO SMART

# Durable | Ruggedized

## M6 Asset Tracking Tag

The M6, a high-performance Bluetooth® asset tracking tag, is designed for industrial applications, offering exceptional structural and installation advantages. Equipped with a large 5200mAh battery, this product boasts an exceptionally 10+ years lifespan. Additionally, its moderate size allows for easy deployment on a wide range of industrial assets. With its water-resistant design, unparalleled broadcasting range and longest battery life, M6 tag can be one of the best choices for asset tracking in warehouse, constructions and logistics.

### Multiple installation method



① Double-sided tape



② Screws



③ Magnetic suction



Magnetic mounting



IP67 waterproof



Industrial design



10+ years battery life

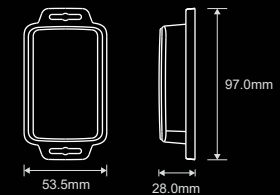
\*Lifespan estimated based on standard firmware default settings under 25 °C conditions.(0dBm Tx Power | 1000ms ADV interval | iBeacon advertisement)



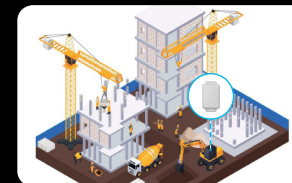
### General specs

|                   |   |
|-------------------|---|
| Connectivity:     | BLE 5.1   |
| Dimensions:       | 97.0 * 53.5 * 28.0mm  |
| Color:            | Gray  |
| Material:         | PC + ASA  |
| Shock resistance: | IK08  |
| IP rating:        | IP67  |
| Sensor:           | Accelerometer sensor<br>Magnetic switch sensor<br>Temperature sensor (Optional)<br>Flash (Optional) |
| Battery capacity: | 5200mAh (Li-SOCl2) or 3200mAh (Alkaline)<br>Replaceable battery                                     |
| Battery lifespan: | 10+ years (Li-SOCl2) or 5 years (Alkaline)  |

|                        |   |
|------------------------|---|
| Operating temperature: | -20°C to 60°C (Li-SOCl2 battery)<br>0°C to 40°C (Alkaline battery)  |
| Transmission range:    | Legacy mode – 490 feet (150m)<br>Long range mode – 1150 feet (350m) |
| Installation:          | Screw   Sticker   Zip Tie<br>Magnetic mounting (Optional)           |
| Certification:         | FCC   CE   RoHS   REACH   |



### More than location



#### Constructions

- Geo-fence alerts
- Asset anti-theft alarm
- Equipment managements



#### Warehouse

- Improve utilization of tools and equipments
- Prevent the use of equipment overdue maintenance or calibration
- Optimize stock levels eliminate shortages



#### Manufacturing

- Raw material tracking
- Turnover box utilization monitoring