



MOKO SMART

# Wayfinding solution Condition monitoring

**L01** Location Anchor



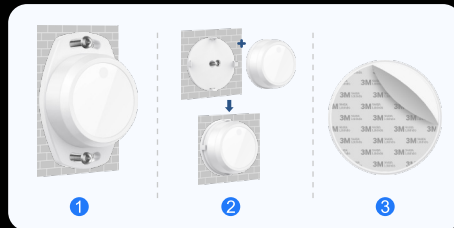
The L01 Location Anchor, a BLE technology based and impressive battery life beacon, is ideal for wayfinding solution, proximity marketing and asset tracking in hospital, shopping mall and warehouse.

Not only providing location-based infrastructure, it can be also integrated with temperature, humidity and barometer sensor through its hardware compatible design, to realize condition monitoring and offer comprehensive application scenarios.

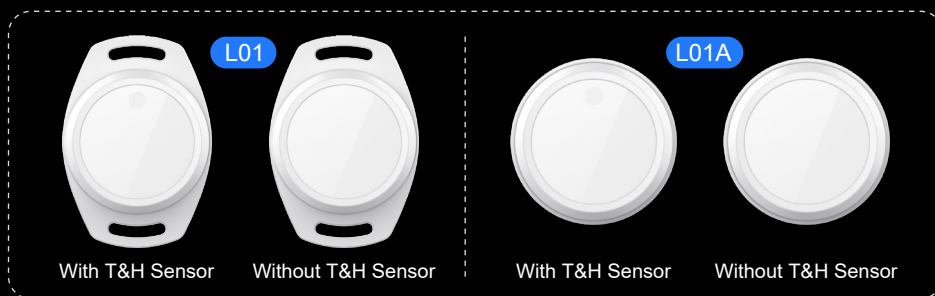
## What Impressed



Rotating replaceable battery



Multiple adaptive installation



With T&H Sensor

Without T&H Sensor

With T&H Sensor

Without T&H Sensor



IP67 waterproof



High accuracy sensing



Historical data storage



Rotating replaceable battery



All-in-one sensor integration

## General Specs

Connectivity:	BLE 5.1
Dimensions:	76.2*53.6*24.0mm (L01) Φ54.5*24.0mm (L01A)
Color:	Gray
Material:	PC
IP rating:	IP67
Sensor:	Temperature&Humidity sensor Hall effect sensor Accelerometer sensor Barometric pressure sensor

Battery capacity:	2400mAh   replaceable battery
Flash memory:	2M Bytes
Battery lifespan:	8+ years - 5s reporting
Operating temperature:	-20°C to 60°C (Can be extended to -40°C~80°C)
Transmission range:	Up to 150m (Without any obstacles)
Installation:	Sticker   Screw   Zip Tie
Certification:	FCC   CE   RoHS   REACH   Bluetooth

## Sensor Specs

Temperature & Humidity sensor	
Accuracy tolerance:	±0.5°C(condition: 0°C - 60°C) ±2% RH(condition: 20% - 80% RH)
Resolution:	0.1°C   0.1% RH
Measurement range:	-40°C - 125°C   0 - 100 %RH
History storage:	50000 groups

## Barometric Pressure Sensor

Pressure measurement range	30kPa - 125kPa
Relative pressure accuracy	±6Pa

